

**COMMUNAL HALLWAY** External glazed security door from Stockwell Street enters the building, with stairs rising to all floors.

**ENTRANCE HALLWAY** External door, phone entry security system.

**BATHROOM** Panel enclosed bath, pedestal wash hand basin, low level w.c, heated towel rail, part tiled walls, extractor fan, shaver point.



**BEDROOM** 10' 9" x 8' 9" (3.28m x 2.67m) Velux window, electric heater, built in wardrobes with sliding mirrored doors, built in cupboard.

**LOUNGE/KITCHEN** 16' 8" max x 14' 0" max (5.08m x 4.27m) A room filled with natural light with double glazed window, two double glazed sky lights, night storage heater, range of matching base and wall mounted units with worksurfaces, one and a half bowl sink unit, space and plumbing for washing machine, built in electric oven, built in electric hob, space for fridge, airing cupboard housing hot water cylinder, built in cupboard.

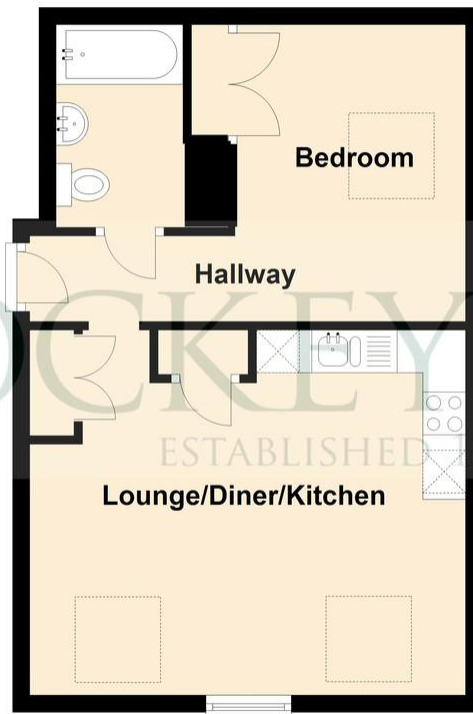


**OUTSIDE** There is a secured bicycle store and on road parking permit available.

**AGENTS NOTE** The lease expires in February 2158.



## Ground Floor



Dove House, Stockwell Street, Cambridge

**IMPORTANT:** Hockeys (Willingham) Ltd for themselves and for the vendors or lessors of this property whose agents they are give notice that the particulars are produced in good faith and are set out as a general guide only and do not constitute any part of a contract and no person in the employment of Hockeys (Willingham) Ltd has any authority to make or give any representation or warranty in relation to this property .

10 Mill Road CB1 2AD  
Telephone: 01223 356054  
Email: [cambridge@hockeys.co.uk](mailto:cambridge@hockeys.co.uk)

[www.hockeys.co.uk](http://www.hockeys.co.uk)

**HOCKEYS**  
ESTABLISHED 1885





Flat 8, Dove House, Stockwell Street,  
Cambridge, CB1 3DZ

£250,000 Leasehold

A stylish one bedroom top floor apartment, that is modern and well presented with the advantage of no onward chain. The property has an open plan living room with kitchen, spacious double bedroom and modern bathroom suite. Located just off the highly popular Mill Road in Cambridge city centre.



**HOCKEYS**  
ESTABLISHED 1885

