

ENTRANCE HALL Double glazed door to entrance hall, doors off to bedrooms, living room/diner and utility room, storage cupboard, radiator, wood effect laminate flooring.

BEDROOM ONE 13' 9" x 9' 10" (4.2m x 3m) Double glazed window to side aspect, built-in double wardrobe storage, radiator, carpeted flooring.

BEDROOM TWO 9' 2" x 9' 2" (2.8 m x 2.8m) Double glazed window to side aspect, radiator, carpeted flooring.

BATHROOM Double glazed frosted window to side aspect, three piece suite comprising panelled bath with shower over with rainfall shower head attachment and tiled surround, hand wash basin with vanity cabinet under and low level WC, wooden worktop surfaces, wall mounted towel rail, radiator, tiled effect laminate flooring.

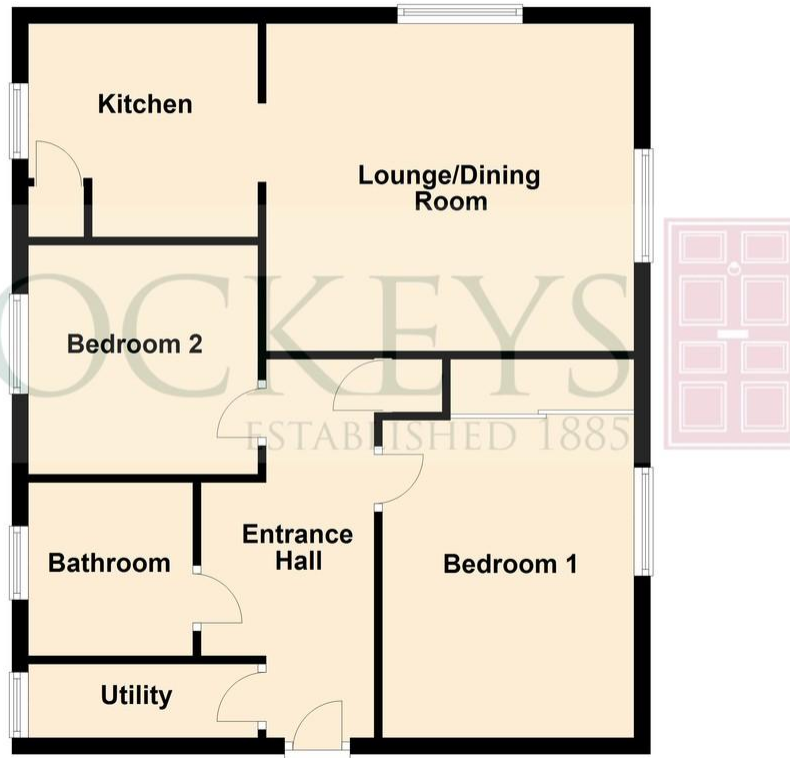
LIVING ROOM/DINER 14' 9" x 13' 1" (4.5m x 4m) Double glazed windows to front and side aspect, radiator, wood effect laminate flooring, opening to kitchen.

KITCHEN 9' 2" x 8' 6" (2.8m x 2.6m) Recently fitted double glazed window to side aspect. Range of wall and floor mounted base units and pantry cupboard, stainless steel sink unit with drainer. Electric cooker with induction hob and extractor over, space for fridge/freezer and dishwasher, space and plumbing for washing machine. Half tiled surround, wood effect laminate flooring.

OUTSIDE There is off road communal parking as well as a communal bin store.



Floor Plan



IMPORTANT: Hockeys (Willingham) Ltd for themselves and for the vendors or lessors of this property whose agents they are give notice that the particulars are produced in good faith and are set out as a general guide only and do not constitute any part of a contract and no person in the employment of Hockeys (Willingham) Ltd has any authority to make or give any representation or warranty in relation to this property .

10 Mill Road CB1 2AD
Telephone: 01223 356054
Email: cambridge@hockeys.co.uk

www.hockeys.co.uk

HOCKEYS
ESTABLISHED 1885





7 Wenvoe Close, Cambridge, CB1 9JG

£260,000 Leasehold

A beautifully presented and modernised first-floor apartment that provides two double bedrooms, along with a newly fitted kitchen and bathroom and a large double aspect living room/diner. The property is situated just off of Cherry Hinton High Street, which provides excellent travel links, schools and an array of amenities on the doorstep.



HOCKEYS
ESTABLISHED 1885

